



Lockgate Road, London  
SW6

GARTON JONES.COM

Lockgate Road, London  
, SW6

GARTON JONES.COM

11 Park Street  
Chelsea Creek  
London  
SW6 2FS

Sales +44 (0) 20 7824 7090  
paul@gartonjones.com  
www.gartonjones.com

£1,211 Per Week

A stunning three-bedroom lateral apartment with three bathroom's which was completed in 2020 and offers an excellent balance of luxury accommodation measuring 1336sqft (124.1sqm). The Apartment is part furnished and offers a highly impressive open plan lounge with a custom-designed kitchen with integrated appliances, access to the south facing balcony with iconic canal views, three bedrooms all benefit from ensuites with two having built in wardrobes, guest cloakroom. The Development boasts luxury wellness amenities with the residents Spa and Fitness centre - with swimming pool, sauna, steam room, treatment room, and gymnasium also a 24-hour concierge services onsite, to cater to your every lifestyle need. Chelsea Creek is a unique dockside development within easy reach of Imperial wharf over ground station as well as the stylish King's Road and Chelsea Harbour, with its many restaurants, bars, and boutiques. Imperial Wharf overground station can be found within a few minutes' walk as well as Fulham Broadway 0.6 of a mile away servicing the District Line with Services Into Central London.

6 Weeks security deposit

12 Month tenancy

Available 4th October 2025

Council Tax- Hammersmith & Fulham Council - band G

- Impressive Three Bedroom Apartment
- 1336 Sq.ft (124.1 Sq.m)
- Three Luxury Bathrooms
- Part Furnished
- South Facing Balcony With Canal Views
- Stunning Lounge & Open Plan Kitchen
- Neutrally Decorated Throughout
- Residents Spa — Swimming Pool & Gym
- 24 Hour Concierge
- Available 4th October 2025

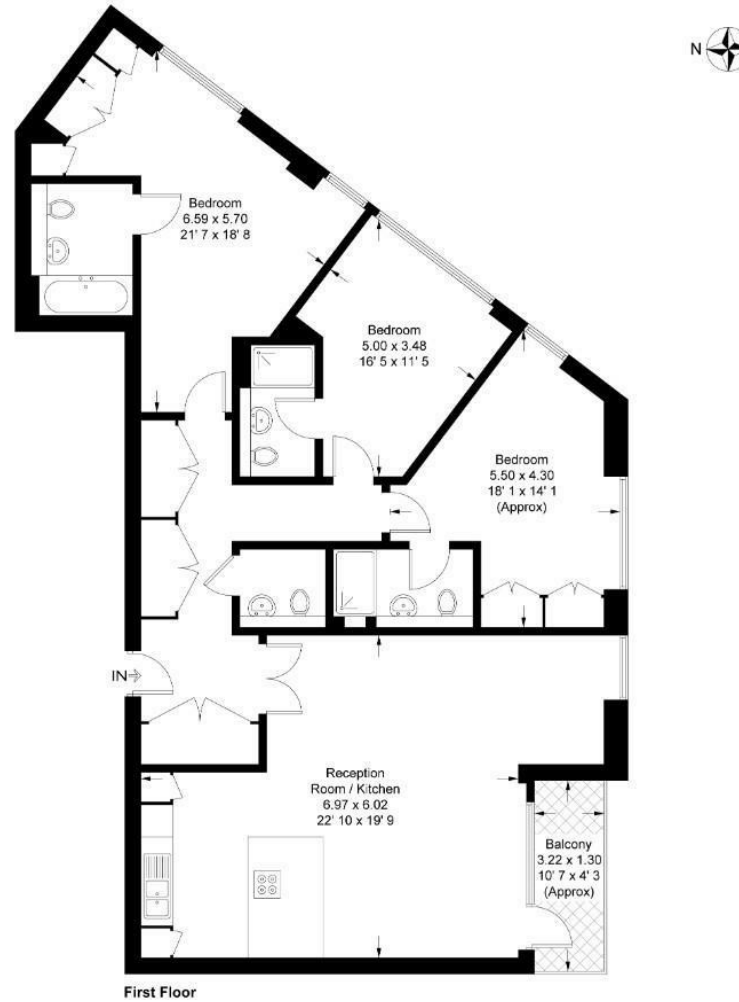


EPC certificate available on request.

**Fairview House**

Approximate Gross Internal Area = 1336 sq ft / 124.1 sq m

Balcony = 45 sq ft / 4.2 sq m

GARTON JONES  
LONDON

This plan is not to scale and must be used as layout guidance only. All measurements and areas are approximate and should not be relied upon to provide accurate information. This plan must not be relied upon when making property valuations, design considerations or any other such relevant decisions. We accept no responsibility or liability (whether in contract, tort or otherwise) in relation to any loss whatsoever arising from or in connection with any use of this plan or the adequacy, accuracy or completeness of it or any information within it.





